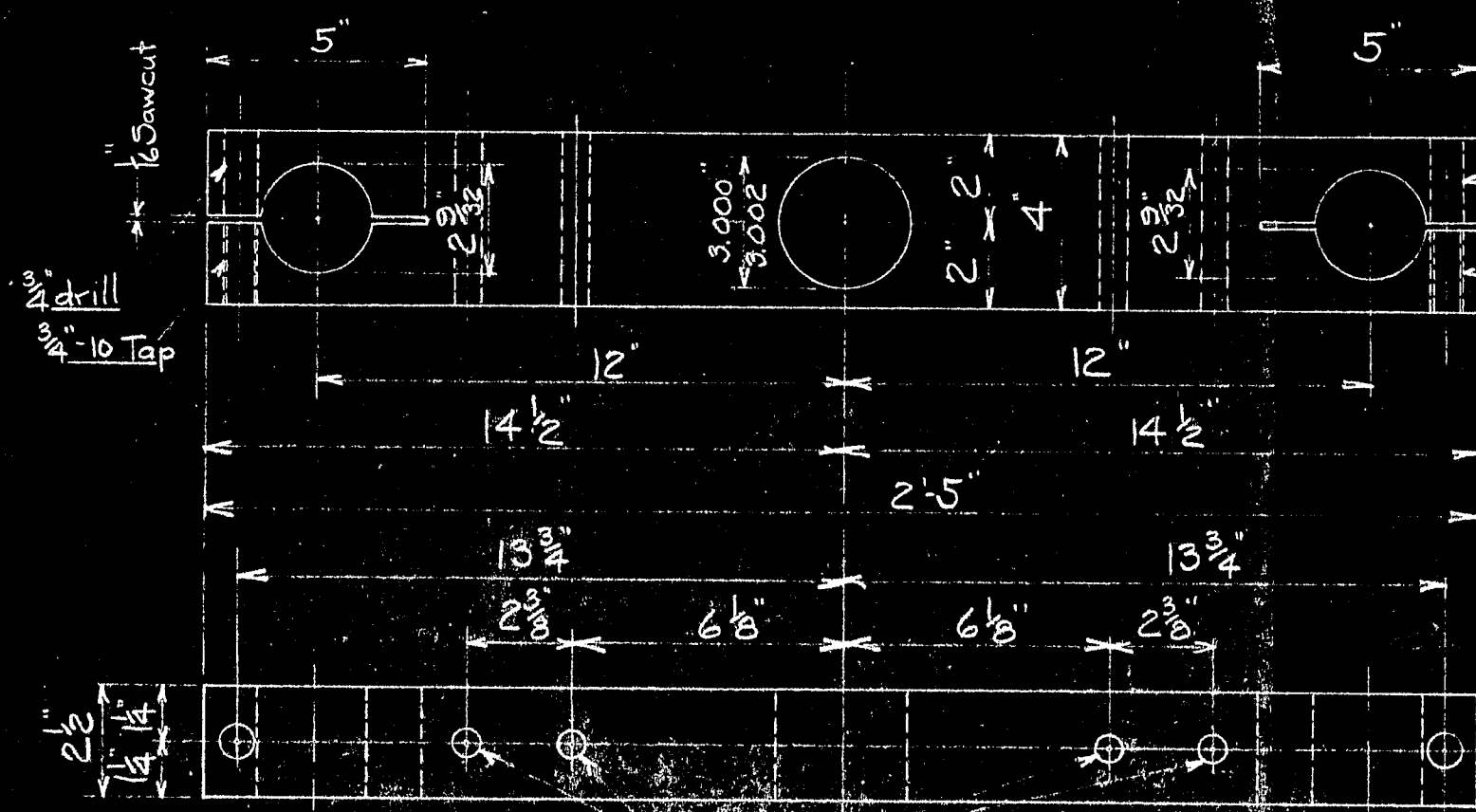
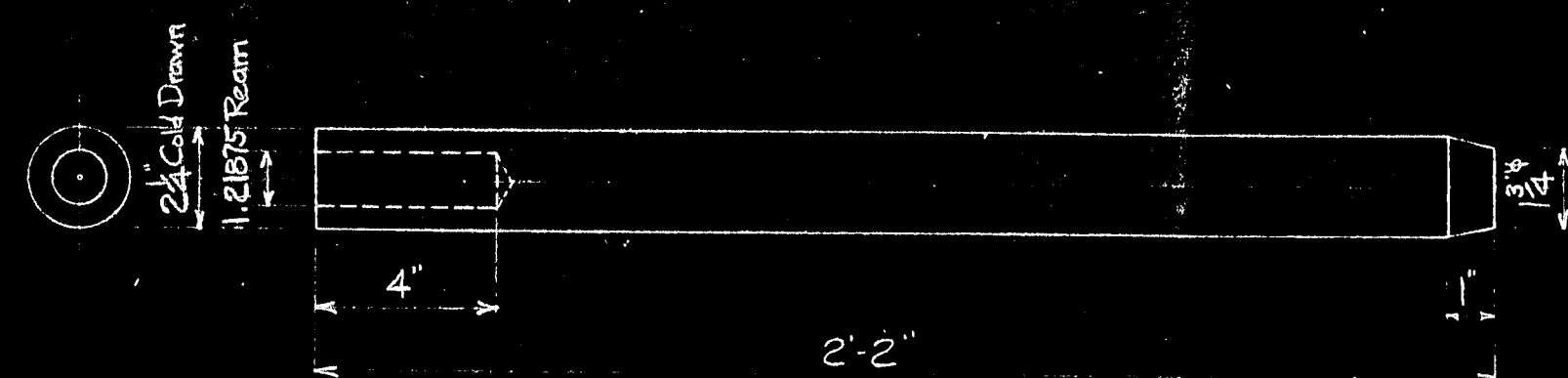


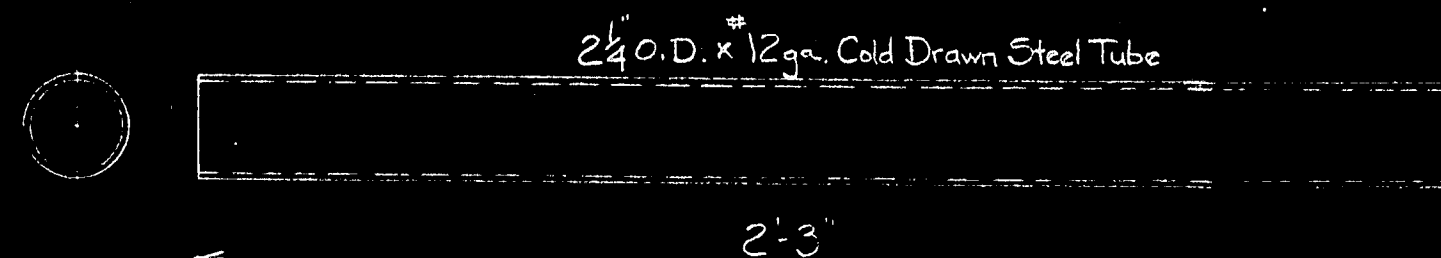
BR150-20A - Hook Plate - AS SHOWN
 BR150-20B - Hook Plate - Opp. Hand to 20A
 BR150-20C - Hook Plate - AS SHOWN
 BR150-20D - Hook Plate - Opp. Hand to 20C



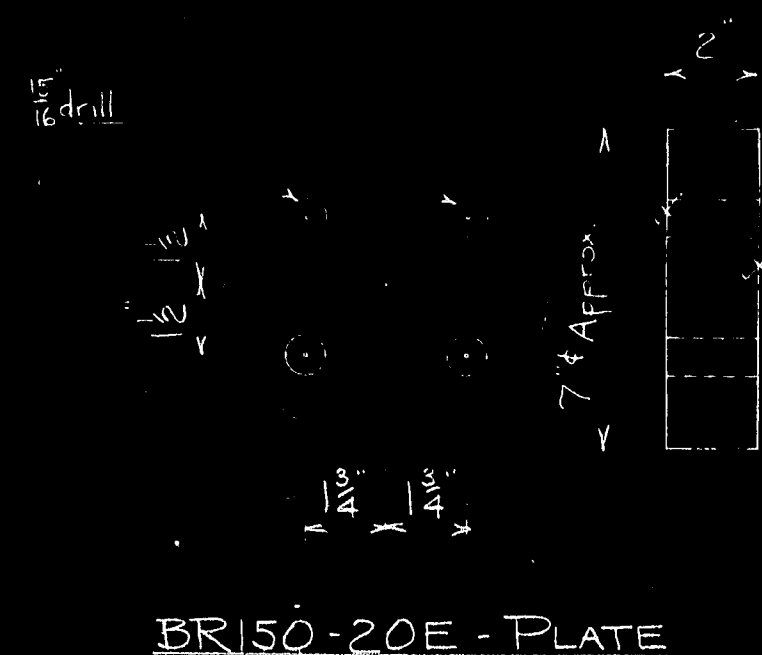
BR150-205 - BAR
 Do all boring in sets of three. Matchmark on top and end.



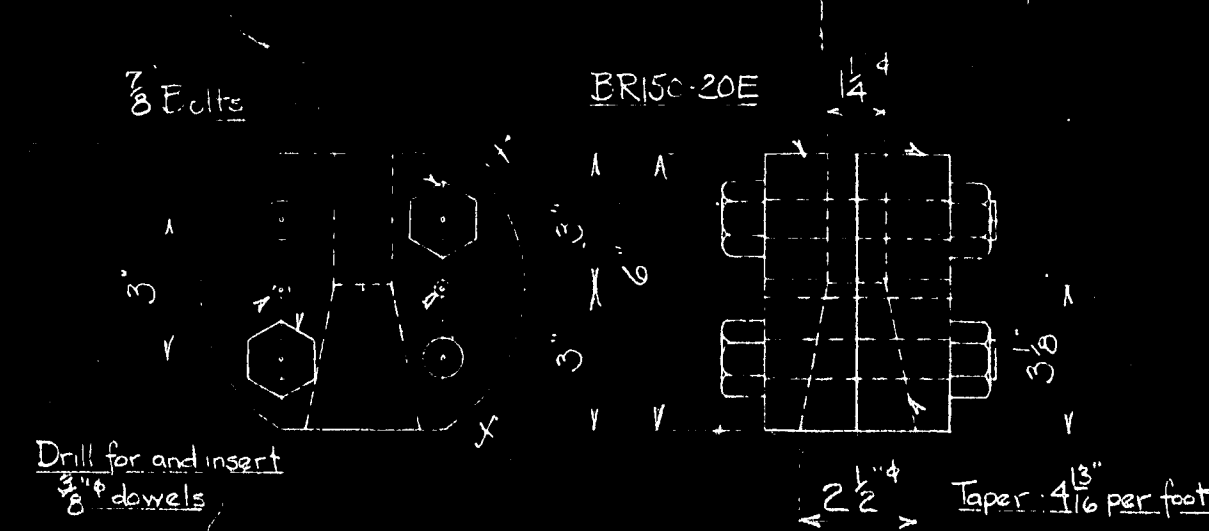
BR150-20T - PIN
 Make from 2 1/2\"/>



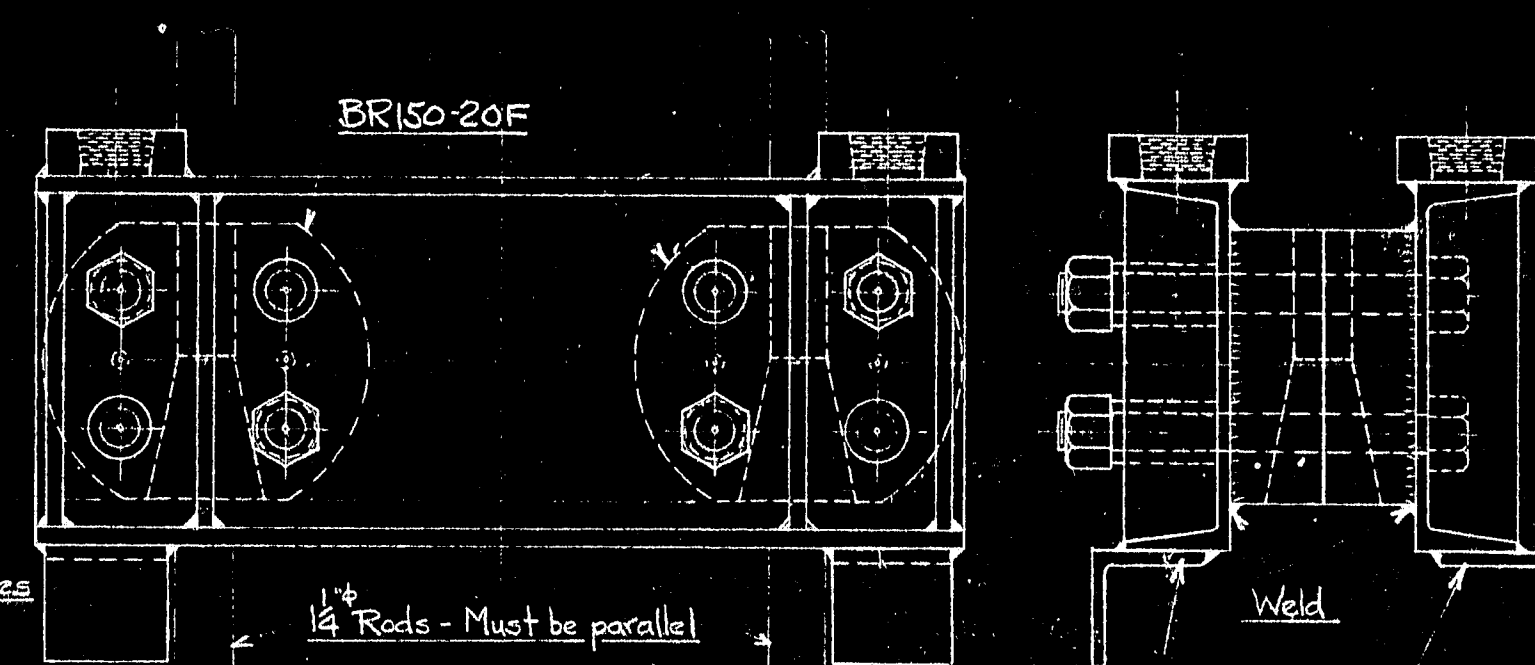
BR150-20U - TUBE



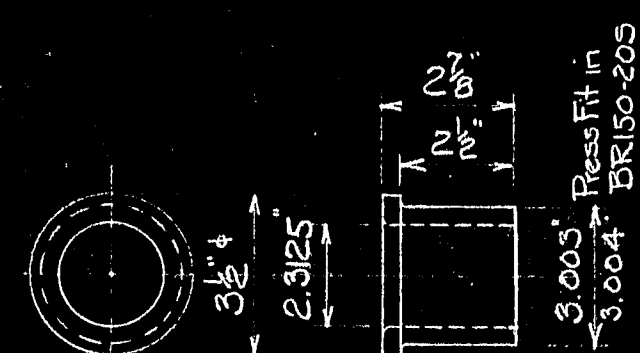
BR150-20E - PLATE



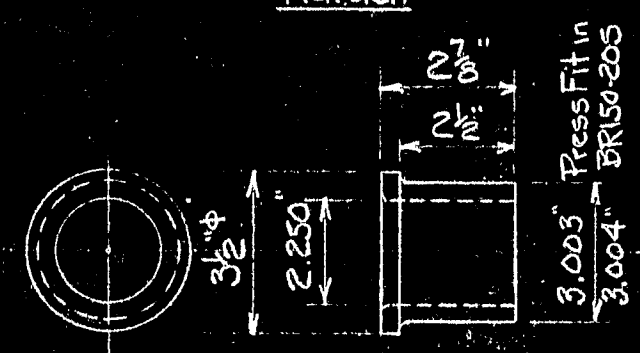
BR150-20F - ASSEMBLY OF PLATES BR150-20E
 Assemble 2 plates BR150-20E with 3/8 bolts. Drill for and insert 3/8 dowels. Face ends. Drill 1 1/4 hole. Machine tapered hole. Matchmark.



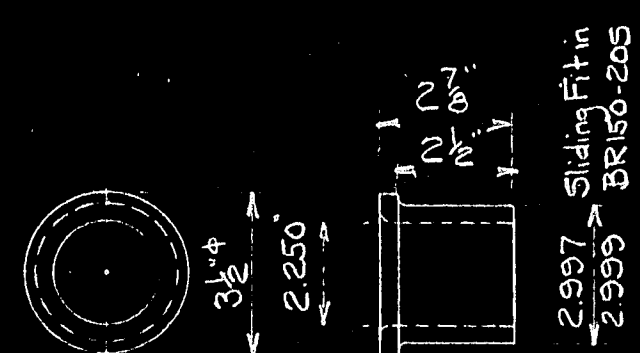
BR150-20H - ASSEMBLY OF BR150-20F AND 20G AND 20AA
 Assemble BR150-20F and 20G with 3/8 bolts as shown. Place 1 1/4 rods in BR150-20F and with 1 1/4 rods parallel and bottom faces of BR150-20F in line, weld BR150-20F to 20G. After welding is completed, drill holes without 3/8 bolts to 1 1/2 and insert BR150-20aa. Remove 3/8 bolts from remaining holes and drill holes to 1 1/2. Matchmark. Remove BR150-20aa, break apart BR150-20F and remove dowel pins.



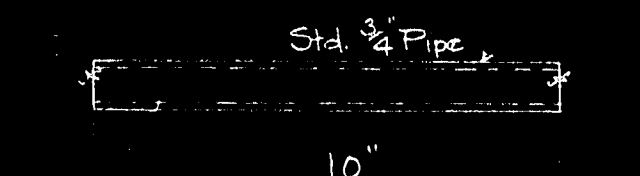
BR150-20V - DRILL BUSHING - F.A.O.



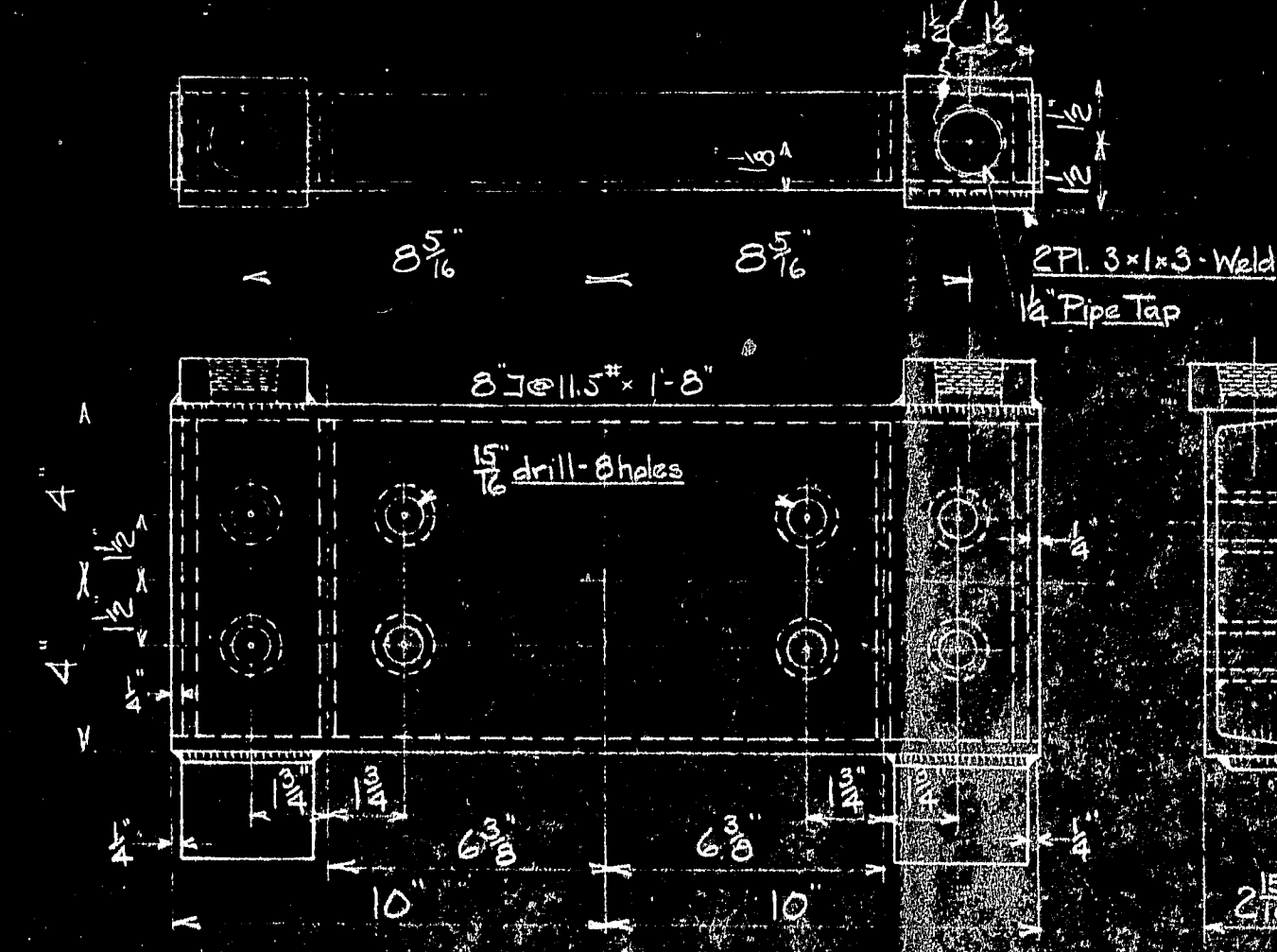
BR150-20W - DRILL BUSHING - F.A.O.



BR150-20X - DRILL BUSHING - F.A.O.



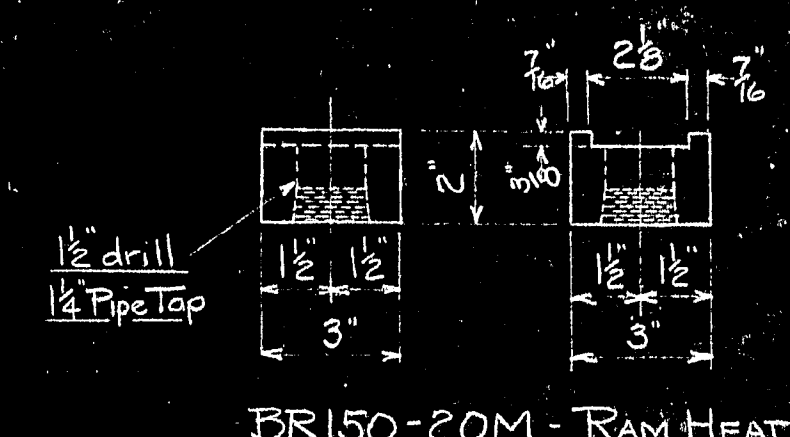
BR150-20Y - SPACER



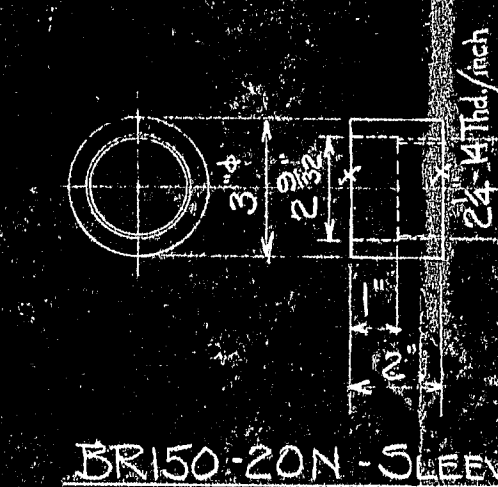
BR150-20G - CHANNEL - WITHOUT PIPES
 BR150-20AA - CHANNEL - WITH PIPES



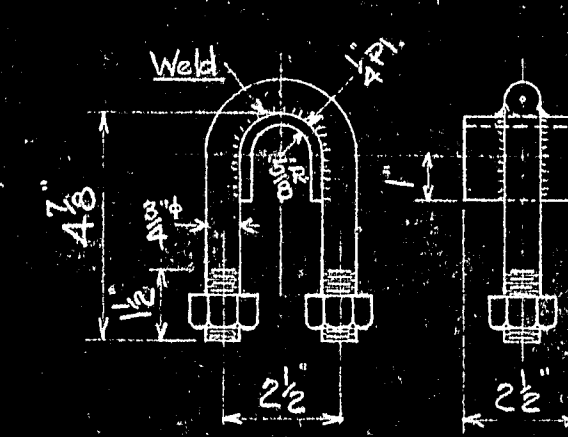
BR150-20K - STRAP



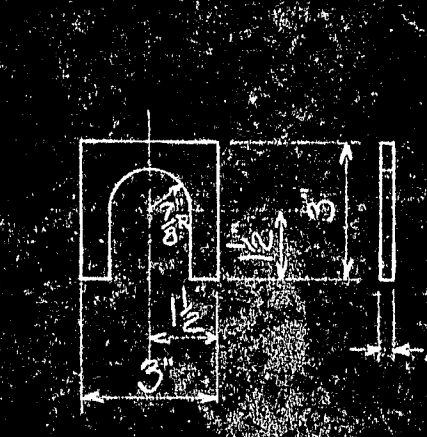
BR150-20M - RAM HEAD



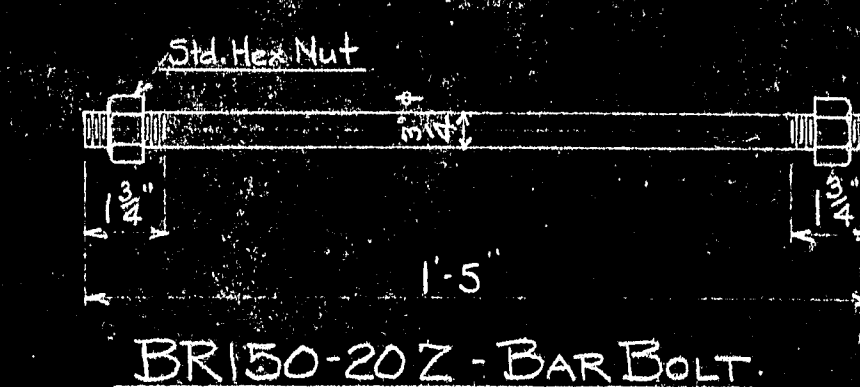
BR150-20N - SLEEVE



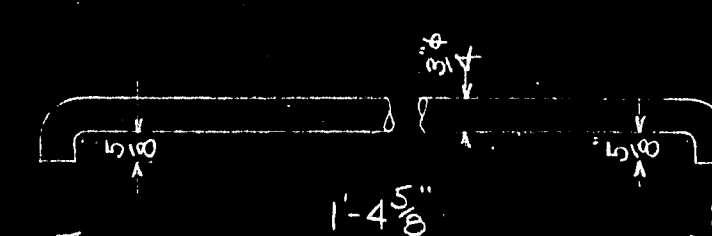
BR150-20P - U-BOLT



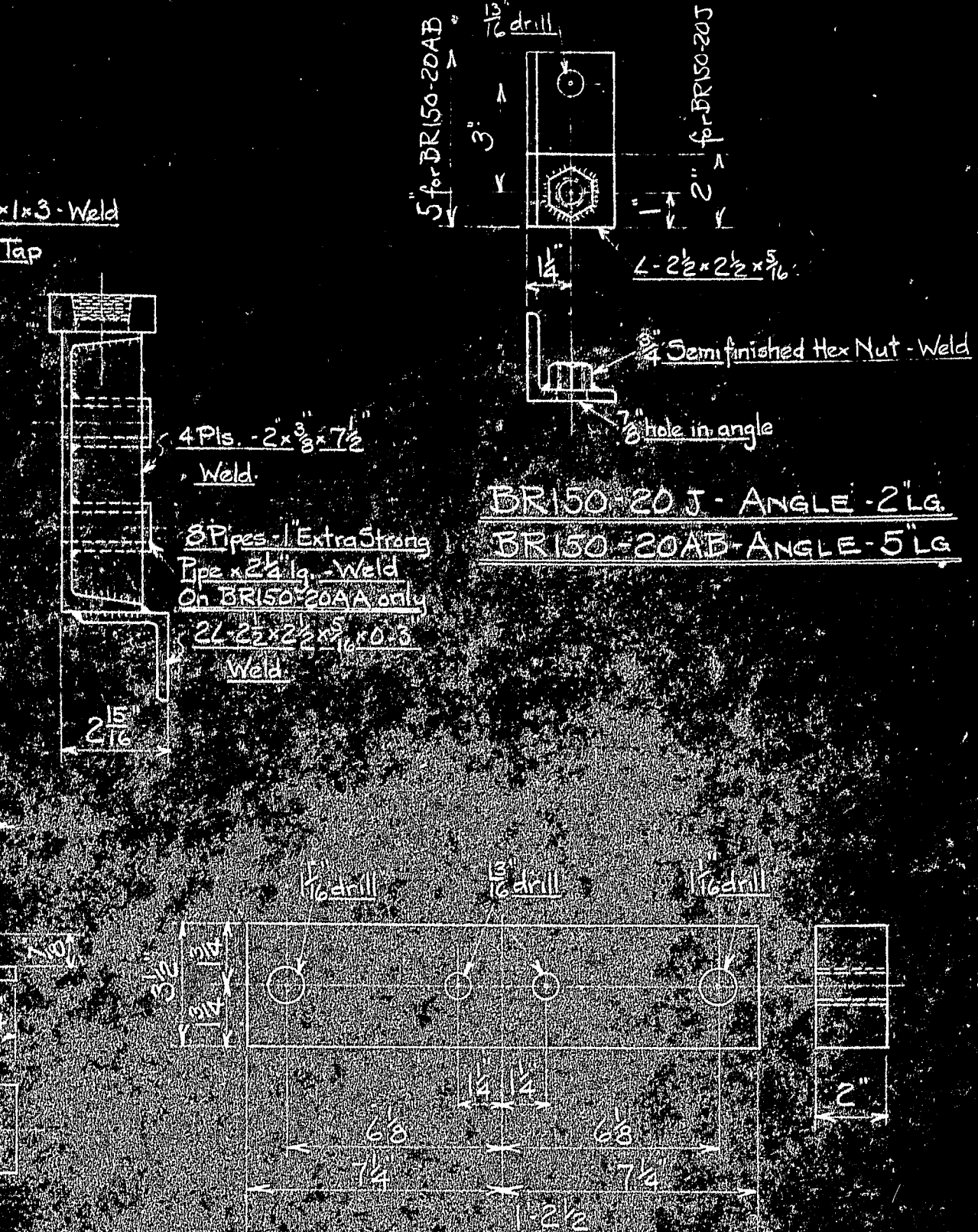
BR150-20R - SHIM



BR150-20Z - BAR BOLT



BR150-20AC - BAR



BR150-20J - ANGLE - 2 Lg.
 BR150-20AB - ANGLE - 5 Lg.

Part No.	Qty.	Material	Description	Remarks
BR150-20ak	8	Steel	1/2 Close Pipe Nipple	
BR150-20ai	16	Steel	3/4 10 Allen Sq. Hd. Cap Screw - 2 1/2 Lg. Full Dog Paint	
BR150-20ah	12	Steel	3/4 10 Socket Hd Cap Screw - 4 1/4 Lg.	
BR150-20aj	8	Steel	1 Hex Hd Cap Screw - 4 1/4 Lg. W/Hex Nut	
BR150-20af	8	Steel	1 Hex Hd Cap Screw - 6 Lg. W/Hex Nut	
BR150-20ag	16	Steel	1 Hex Hd Cap Screw - 8 Lg. W/Hex Nut	
BR150-20ac	4	Steel	Bar	
BR150-20ab	8	Steel	Angle - 5 Lg.	
BR150-20aa	2	Steel	Channel with pipes	
BR150-20g	4	Steel	Bar Bolt	
BR150-20i	4	Pipe	Spacer	
BR150-20j	3	Steel	Drill Bushing - F.A.O.	Harden
BR150-20k	3	Steel	Drill Bushing - F.A.O.	Harden
BR150-20l	3	Steel	Drill Bushing - F.A.O.	Harden
BR150-20m	4	Steel	Tube	
BR150-20n	2	S. Note	Pin	
BR150-20o	6	Steel	Bar	See Note
BR150-20p	32	Steel	Shim	
BR150-20q	6	Steel	U-Bolt	
BR150-20r	8	Steel	Sleeve	
BR150-20s	8	Steel	Ram Head	
BR150-20t	4	Steel	Bar	
BR150-20u	16	Steel	Strap	
BR150-20v	8	Steel	Angle - 2 Lg.	Weld to 20A & 20D
BR150-20w	2	Steel	Assembly of BR150-20F, 20G & 20AA	
BR150-20x	2	Steel	Channel - without pipes	
BR150-20y	4	Steel	Assembly of Plates BR150-20E	
BR150-20z	8	Steel	Plate	
BR150-20a	2	Steel	Hook Plate - Opp. Hand to 20C	
BR150-20b	2	Steel	Hook Plate - Opp. Hand to 20A	
BR150-20c	2	Steel	Hook Plate - Opp. Hand to 20A	
BR150-20d	2	Steel	Hook Plate - Opp. Hand to 20A	
BR150-20e	2	Steel	Hook Plate - Opp. Hand to 20A	
BR150-20f	2	Steel	Hook Plate - Opp. Hand to 20A	
BR150-20g	2	Steel	Hook Plate - Opp. Hand to 20A	
BR150-20h	2	Steel	Hook Plate - Opp. Hand to 20A	
BR150-20i	2	Steel	Hook Plate - Opp. Hand to 20A	
BR150-20j	2	Steel	Hook Plate - Opp. Hand to 20A	
BR150-20k	2	Steel	Hook Plate - Opp. Hand to 20A	
BR150-20l	2	Steel	Hook Plate - Opp. Hand to 20A	
BR150-20m	2	Steel	Hook Plate - Opp. Hand to 20A	
BR150-20n	2	Steel	Hook Plate - Opp. Hand to 20A	
BR150-20o	2	Steel	Hook Plate - Opp. Hand to 20A	
BR150-20p	2	Steel	Hook Plate - Opp. Hand to 20A	
BR150-20q	2	Steel	Hook Plate - Opp. Hand to 20A	
BR150-20r	2	Steel	Hook Plate - Opp. Hand to 20A	
BR150-20s	2	Steel	Hook Plate - Opp. Hand to 20A	
BR150-20t	2	Steel	Hook Plate - Opp. Hand to 20A	
BR150-20u	2	Steel	Hook Plate - Opp. Hand to 20A	
BR150-20v	2	Steel	Hook Plate - Opp. Hand to 20A	
BR150-20w	2	Steel	Hook Plate - Opp. Hand to 20A	
BR150-20x	2	Steel	Hook Plate - Opp. Hand to 20A	
BR150-20y	2	Steel	Hook Plate - Opp. Hand to 20A	
BR150-20z	2	Steel	Hook Plate - Opp. Hand to 20A	

MARK	REQ'D	MAT'L	REQ. NO.	NAME	REMARKS
BILL OF MATERIAL					
JOHN A. ROEBLING'S SONS CO., TRENTON, N. J.					
DEER ISLE BRIDGE REINFORCEMENT					
DETAILS OF EQUIPMENT FOR					
REPAIRING 2 1/2\"/>					

